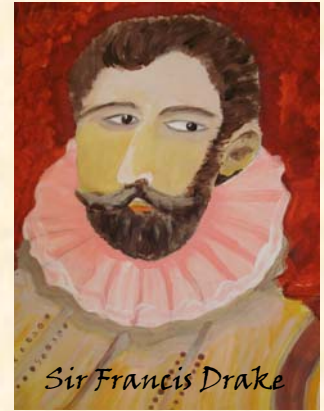


# An Overview of Curriculum Content for Science & the Foundation Subjects

## Grade 6 Term 2



Sir Walter Raleigh



Sir Francis Drake

### Science

QCA Unit 6D Reversible and irreversible changes  
Use scientific knowledge & understanding to explain reversible changes, changes that occur due to mixing & changes in temperature  
QCA Unit 6E Forces in action  
Use forces, magnetic attraction, gravitational attraction, changes in motion

### Geography

QCA Unit 23 Investigating Coasts  
Water & its effects on the landscape, land uses, effects of waves on the coast, importance of managing a coastline  
QCA Unit 15 The Mountain Environment  
The Dominican Republic / Land Use

### History

QCA Unit 19 What were the effects of Tudor Exploration  
impact on sailors, settlers & the indigenous people, problems with settlement & trade, voyages of Tudor explorers & reasons for exploration, the impact of Tudor exploration on our lives  
Link with Geography Unit 23

### Design Technology

QCA Unit 6D Controllable Vehicles  
Design & construct vehicles using electrical circuits, comprehend how axles, wheels & switches work  
Link with Science Unit 6E

### Art & Design

QCA Unit 6C A Sense of Place  
explore rural/urban landscapes, 2 dimensional work, use shape, form, colour and texture to develop ideas in a painting  
Selected Artist: Claude Monet - Landscapes

### ICT

QCA Unit 6D Using the Internet to search & interpret large databases, interpret & understand information

### Music

Musical Period and Composers  
Scripted plays and monologues, rhythm band, application and understanding of modern music

### French

The Ashcroft News, vocabulary for 'The Morning Activities'  
Going out to activity clubs and other venues, like the cinema

### Physical Education

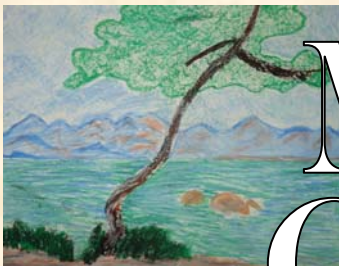
Athletics, Volleyball and other net games . . . Sports Day!!

### RE / Citizenship

QCA Unit 6D What is the Qur'an and why is it important to Muslims  
QCA Unit 10 Local democracy for young children



Christopher Columbus



M  
O  
N  
E  
T